

APPLY FLASHING AT HEAD.
ACCEPTABLE METHODS INCLUDE:
LIQUID MEMBRANE FLASHING,
APPROPRIATE FLASHING TAPE,
OR CANT BEAD OF COMPATIBLE
SEALANT APPLIED TO HEAD AND A
MINIMUM OF 6" DOWN EACH SIDE

FIBER MESH OR LATHE MUST BE
APPLIED OVER JOINT AROUND
THE PARAMETER OF DECO-FLASH

FASTEN TO SUBSTRATE 2"
FROM CORNERS AND EVERY 8"
ON CENTER USING A MINIMUM OF 1"
EXTERIOR GRADE NAILS OR SCREWS

PERIMETER CAULK BEHIND NAILING
FLANGE BY APPLYING 2 CONTINUOUS
3/8" BEADS OF SEALANT:
ONE IN LINE WITH THE LOCATION
OF THE FASTENERS AND ONE 1"
FROM DECO-FLASH JAMB RETURN.

APPLY SEALANT

HEADER

SILL

PERIMETER CAULK BEHIND NAILING
FLANGE BY APPLYING 2 CONTINUOUS
3/8" BEADS OF SEALANT:
ONE IN LINE WITH THE LOCATION
OF THE FASTENERS AND ONE 1"
FROM DECO-FLASH JAMB RETURN.

FASTEN TO SUBSTRATE 2"
FROM CORNERS AND EVERY 8"
ON CENTER USING A MINIMUM OF 1"
EXTERIOR GRADE NAILS OR SCREWS

FIBER MESH OR LATHE MUST BE
APPLIED OVER JOINT AROUND
THE PARAMETER OF DECO-FLASH

SHIM AS REQUIRED

APPLY PERIMETER SEALANT

APPLY PERIMETER SEALANT

SHIM AS REQUIRED

DECO-FLASH
4717 Oakfair Blvd.
Tampa, FL. 33610
Ph: 813-397-2827
www.deco-flash.com

PERIMETER CAULK BEHIND NAILING
FLANGE BY APPLYING 2 CONTINUOUS
3/8" BEADS OF SEALANT:
ONE IN LINE WITH THE LOCATION
OF THE FASTENERS AND ONE 1"
FROM DECO-FLASH JAMB RETURN.

FIBER MESH OR LATHE MUST BE
APPLIED OVER JOINT AROUND THE
PARAMETER OF DECO-FLASH

FASTEN TO SUBSTRATE 2"
FROM CORNERS AND EVERY 8"
ON CENTER USING A MINIMUM OF 1"
EXTERIOR GRADE NAILS OR SCREW

JAMB

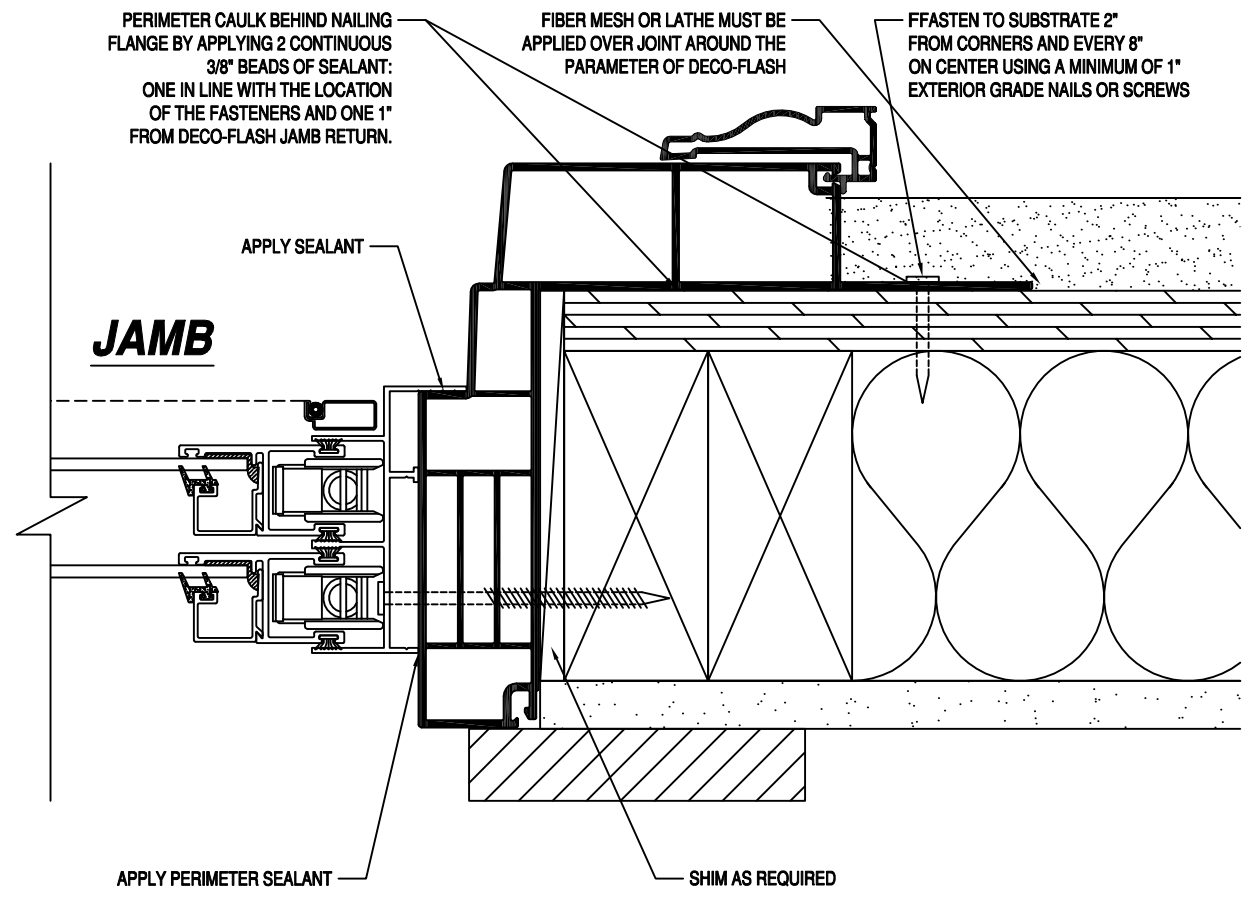
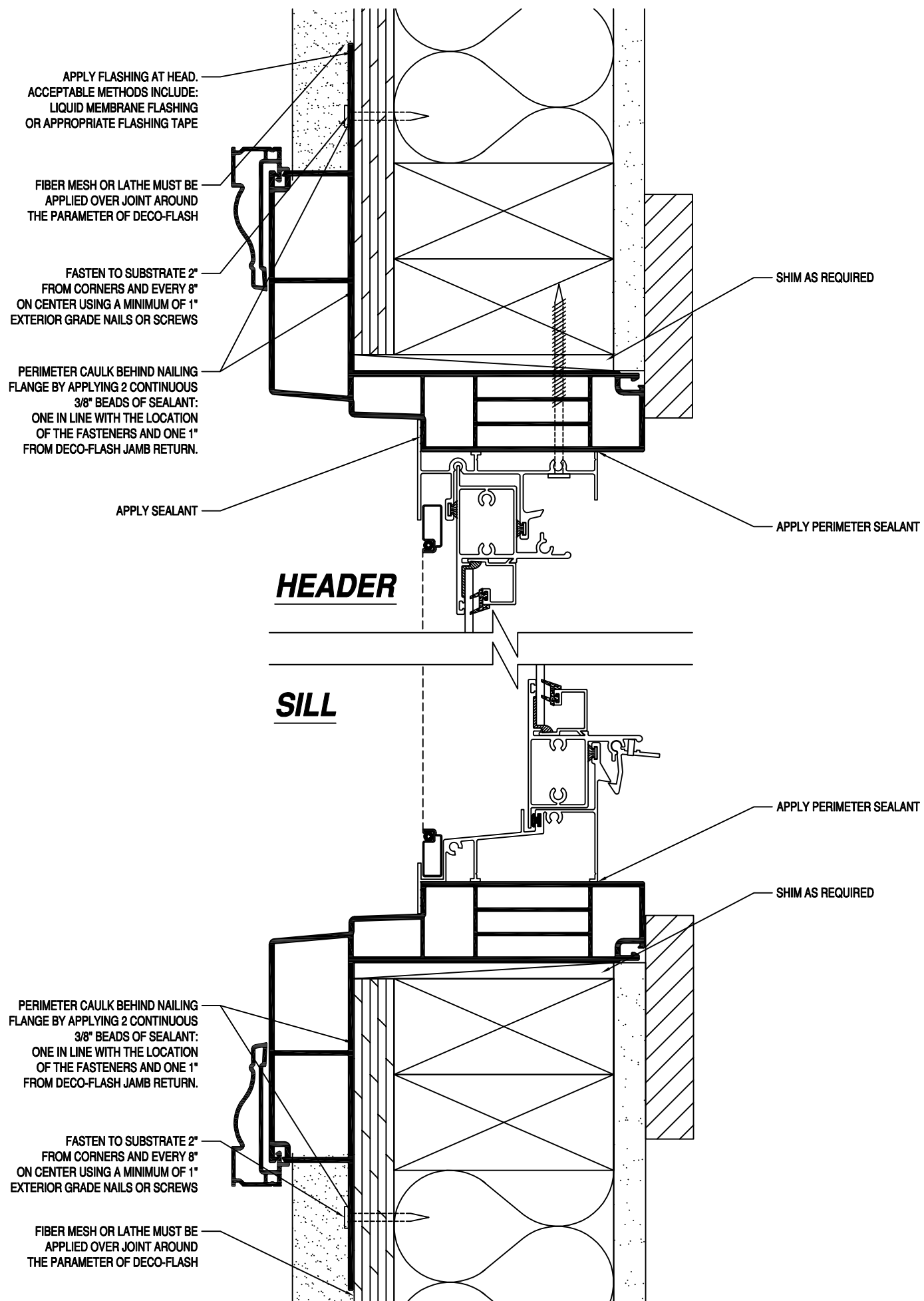
APPLY SEALANT

APPLY PERIMETER SEALANT

SHIM AS REQUIRED

This document and the information contained is owned by and proprietary to Deco-Flash. By receipt hereof, the holder agrees not to use the information, disclose it to any third parties nor reproduce this document without the prior written consent of Deco-Flash, and agrees to return this document forthwith upon request.

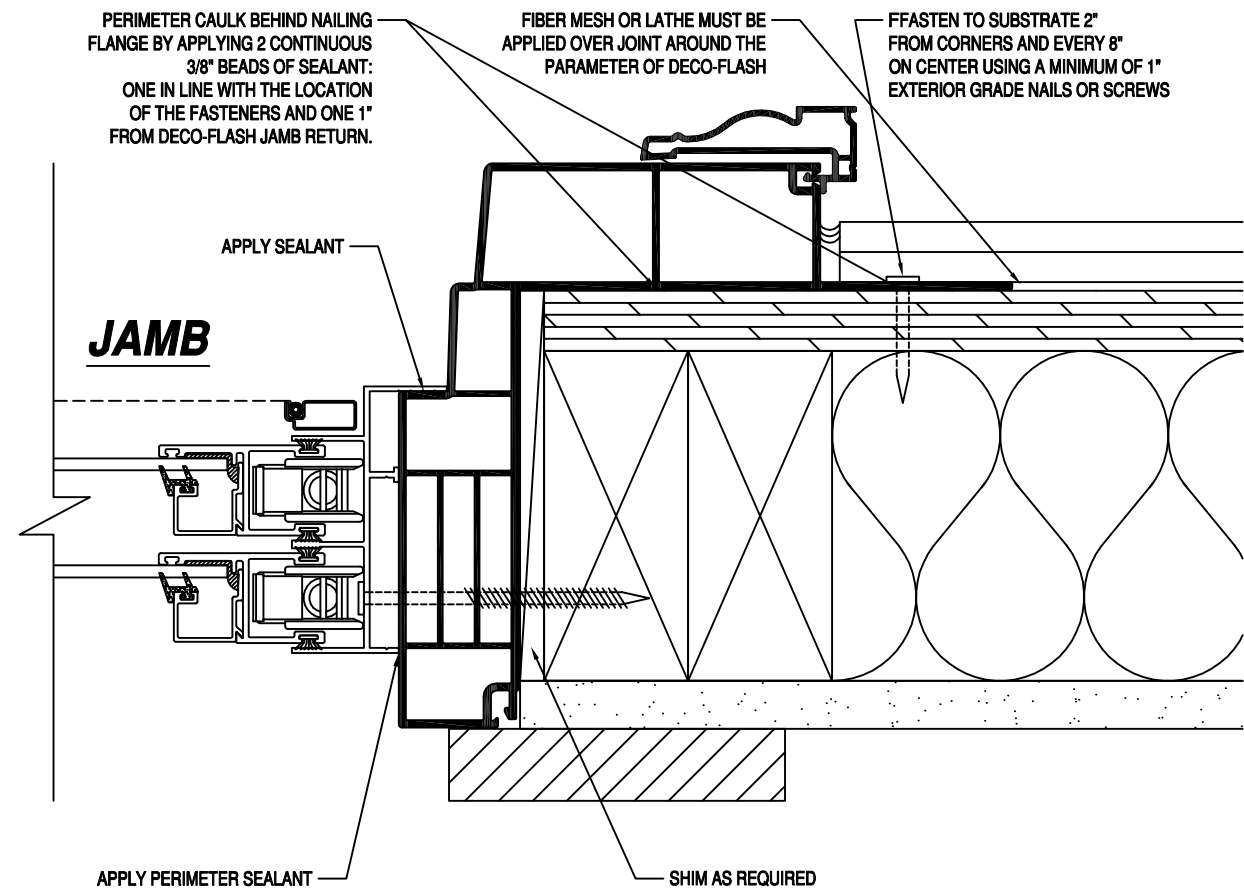
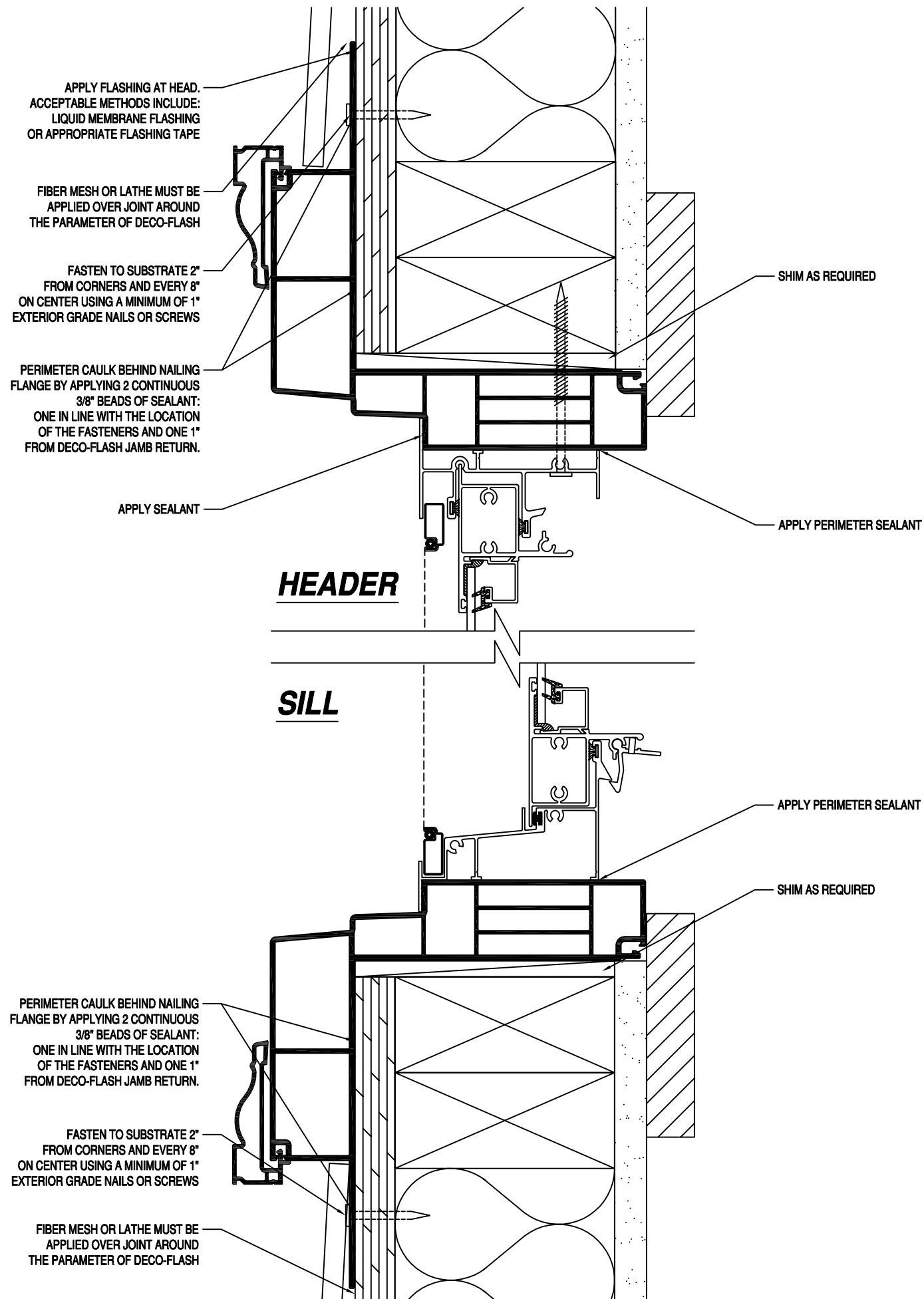
TOLERANCES X.XX ± 0.015 X.XXX ± 0.010 X.XXXX ± 0.005		CUSTOMER: DECO-FLASH			
DO NOT SCALE DRAWING ALL DIMENSIONS ARE IN INCHES U.S.S.		PART: (MFC45/BB1) MASONRY/STUCCO			
SIZE: 17x11	COLOUR: VARIOUS	MATERIAL: RIGID PVC	AREA: - 2	TOOL NO.:-	DATE: 10-01-2016
SHEET: 1 of 1	DRAWN BY: -	SCALE: 1 : 2	VOLUME: -	PART NO.:MFC45/BB1	DWG NO.:MFC45/BB1/M/S



DECO-FLASH
 4717 Oakfair Blvd.
 Tampa, FL. 33610
 Ph: 813-397-2827
 www.deco-flash.com

This document and the information contained is owned by and proprietary to Deco-Flash. By receipt hereof, the holder agrees not to use the information, disclose it to any third parties nor reproduce this document without the prior written consent of Deco-Flash, and agrees to return this document forthwith upon request.

TOLERANCES X.XX ± 0.015 X.XXX ± 0.010 X.XXXX ± 0.005 <small>DO NOT SCALE DRAWING ALL DIMENSIONS ARE IN INCHES U.O.S.</small>		CUSTOMER: DECO-FLASH			
SIZE: 17x11		COLOUR: VARIOUS		MATERIAL: RIGID PVC	
SHEET: 1 of 1		DRAWN BY: -		SCALE: 1 : 2	
AREA: - 2		TOOL NO.: -		DATE: 10-01-2016	
VOLUME: -		PART NO.: MFC45/BB1		DWG NO.: MFC45/BB1/F/S	



DECO-FLASH[®]
 4717 Oakfair Blvd.
 Tampa, FL. 33610
 Ph: 813-397-2827
 www.deco-flash.com

This document and the information contained is owned by and proprietary to Deco-Flash. By receipt hereof, the holder agrees not to use the information, disclose it to any third parties nor reproduce this document without the prior written consent of Deco-Flash, and agrees to return this document forthwith upon request.

TOLERANCES X.XX ± 0.015 X.XXX ± 0.010 X.XXXX ± 0.005 DO NOT SCALE DRAWING ALL DIMENSIONS ARE IN INCHES U.S.S.		CUSTOMER: DECO-FLASH			
PART: (MFC45/BB1) FRAME/LAP SIDING					
SIZE: 17x11	COLOUR: VARIOUS	MATERIAL: RIGID PVC	AREA: - 2	TOOL NO.: -	DATE: 10-01-2016
SHEET: 1 of 1	DRAWN BY: -	SCALE: 1 : 2	VOLUME: -	PART NO.: MFC45/BB1	DWG NO.: MFC45/BB1/F/LS