

APPLY FLASHING AT HEAD.
ACCEPTABLE METHODS INCLUDE:
LIQUID MEMBRANE FLASHING,
APPROPRIATE FLASHING TAPE,
OR CANT BEAD OF COMPATIBLE
SEALANT APPLIED TO HEAD AND A
MINIMUM OF 6" DOWN EACH SIDE

FIBER MESH OR LATHE MUST BE
APPLIED OVER JOINT AROUND
THE PARAMETER OF DECO-FLASH

FASTEN TO SUBSTRATE 2"
FROM CORNERS AND EVERY 8"
ON CENTER USING A MINIMUM OF 1"
EXTERIOR GRADE NAILS OR SCREWS

PERIMETER CAULK BEHIND NAILING
FLANGE BY APPLYING 2 CONTINUOUS
3/8" BEADS OF SEALANT:
ONE IN LINE WITH THE LOCATION
OF THE FASTENERS AND ONE 1"
FROM DECO-FLASH JAMB RETURN.

APPLY SEALANT

HEADER

SILL

SHIM AS REQUIRED

APPLY PERIMETER SEALANT

APPLY PERIMETER SEALANT

SHIM AS REQUIRED

PERIMETER CAULK BEHIND NAILING
FLANGE BY APPLYING 2 CONTINUOUS
3/8" BEADS OF SEALANT:
ONE IN LINE WITH THE LOCATION
OF THE FASTENERS AND ONE 1"
FROM DECO-FLASH JAMB RETURN.

FASTEN TO SUBSTRATE 2"
FROM CORNERS AND EVERY 8"
ON CENTER USING A MINIMUM OF 1"
EXTERIOR GRADE NAILS OR SCREWS

FIBER MESH OR LATHE MUST BE
APPLIED OVER JOINT AROUND THE
WHOLE PARAMETER OF DECO-FLASH

PERIMETER CAULK BEHIND NAILING
FLANGE BY APPLYING 2 CONTINUOUS
3/8" BEADS OF SEALANT:
ONE IN LINE WITH THE LOCATION
OF THE FASTENERS AND ONE 1"
FROM DECO-FLASH JAMB RETURN.

FIBER MESH OR LATHE MUST BE
APPLIED OVER JOINT AROUND THE
PARAMETER OF DECO-FLASH

FASTEN TO SUBSTRATE 2"
FROM CORNERS AND EVERY 8"
ON CENTER USING A MINIMUM OF 1"
EXTERIOR GRADE NAILS OR SCREWS

APPLY SEALANT

JAMB

APPLY PERIMETER SEALANT

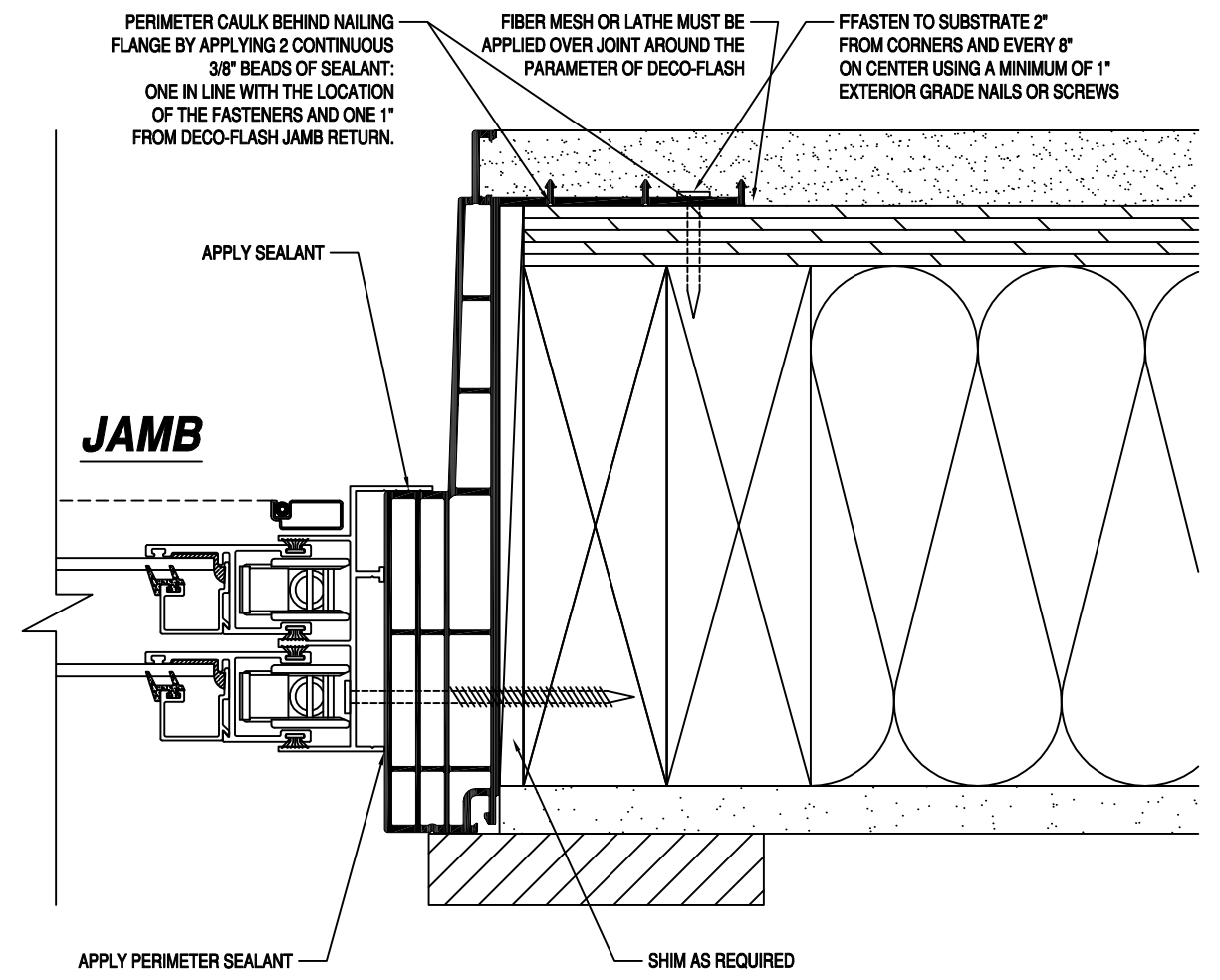
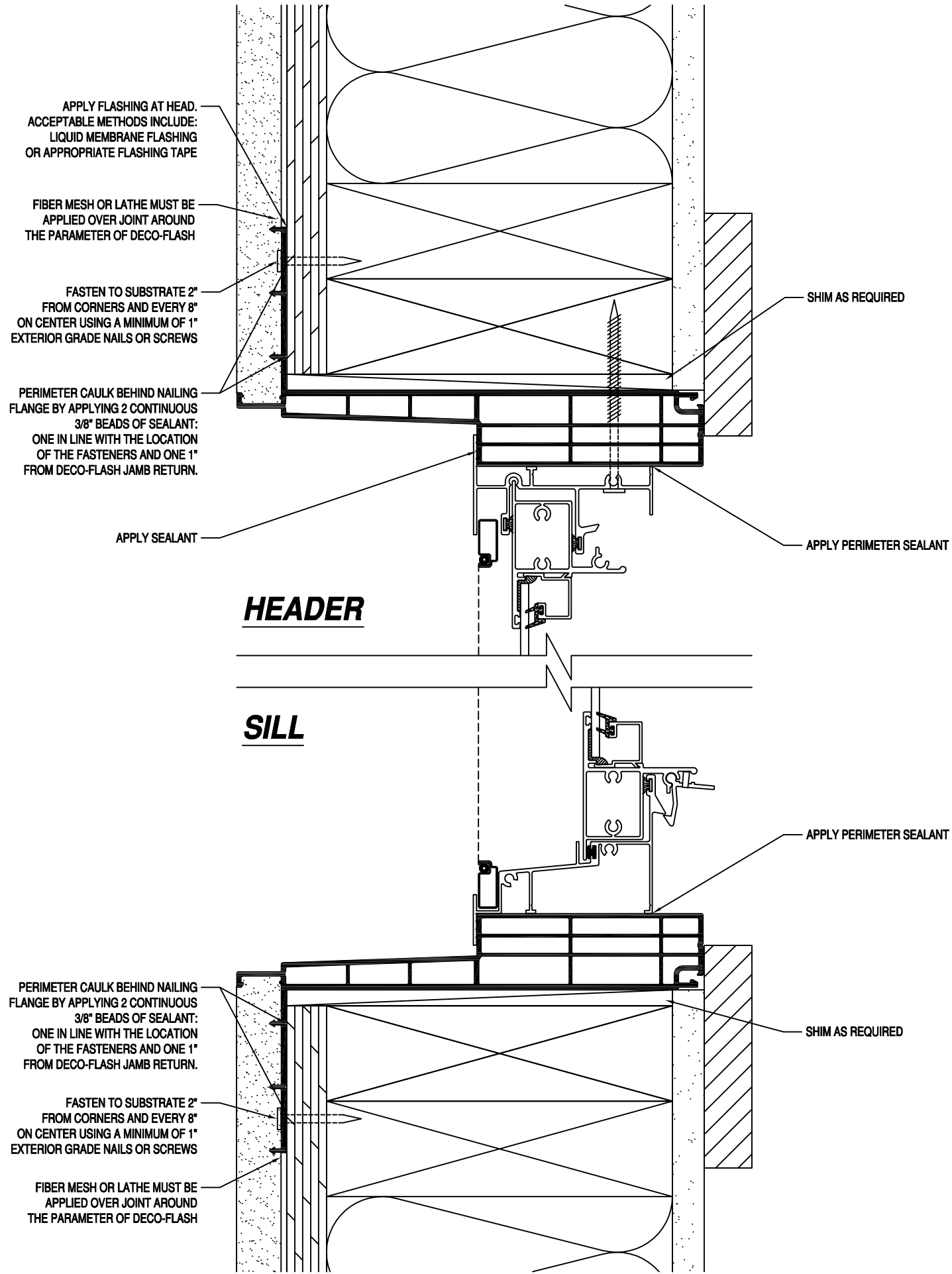
SHIM AS REQUIRED

DECO-FLASH

4717 Oakfair Blvd.
Tampa, FL. 33610
Ph: 813-397-2827
www.deco-flash.com

This document and the information contained is owned by and proprietary to Deco-Flash. By receipt hereof, the holder agrees not to use the information, disclose it to any third parties nor reproduce this document without the prior written consent of Deco-Flash, and agrees to return this document forthwith upon request.

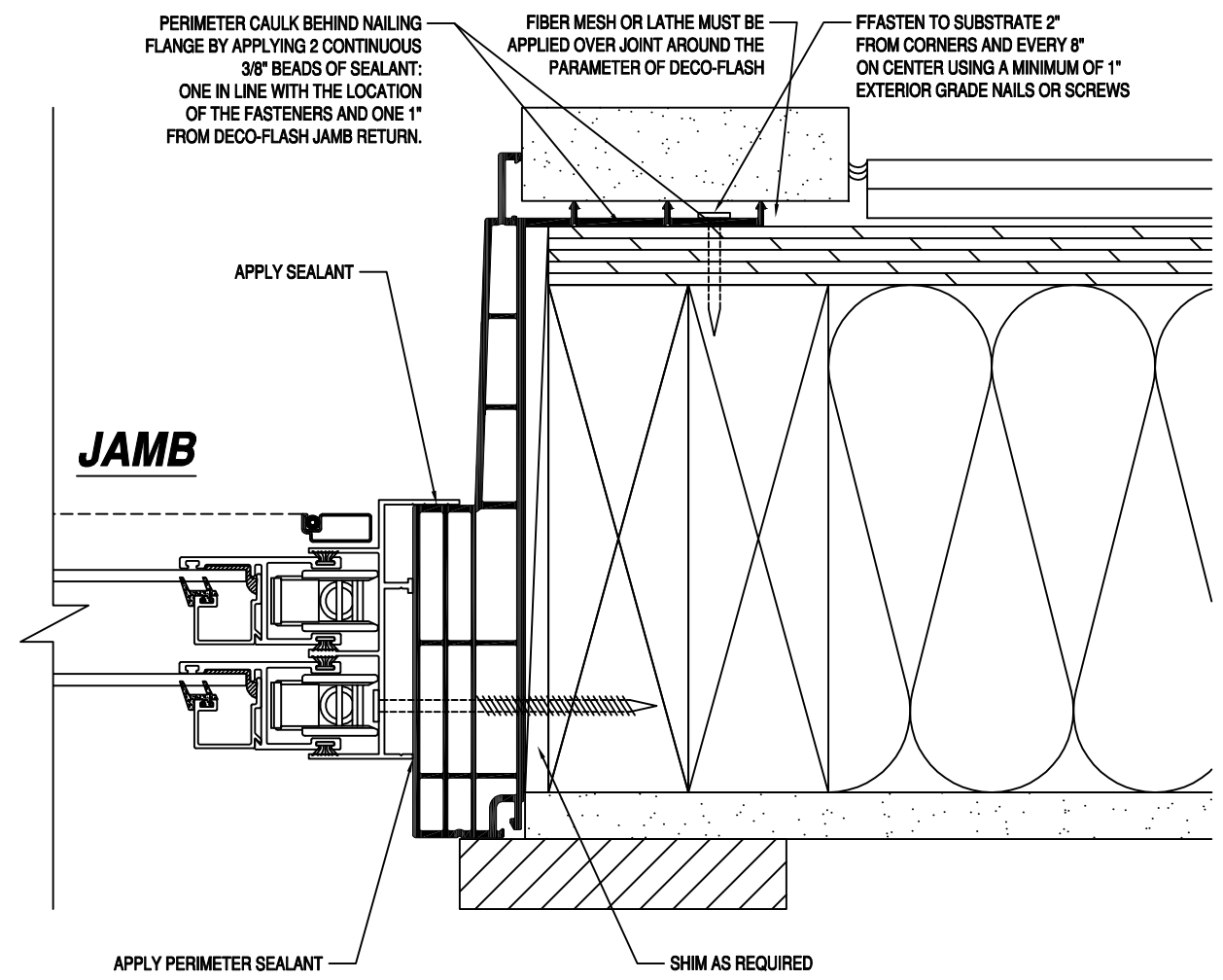
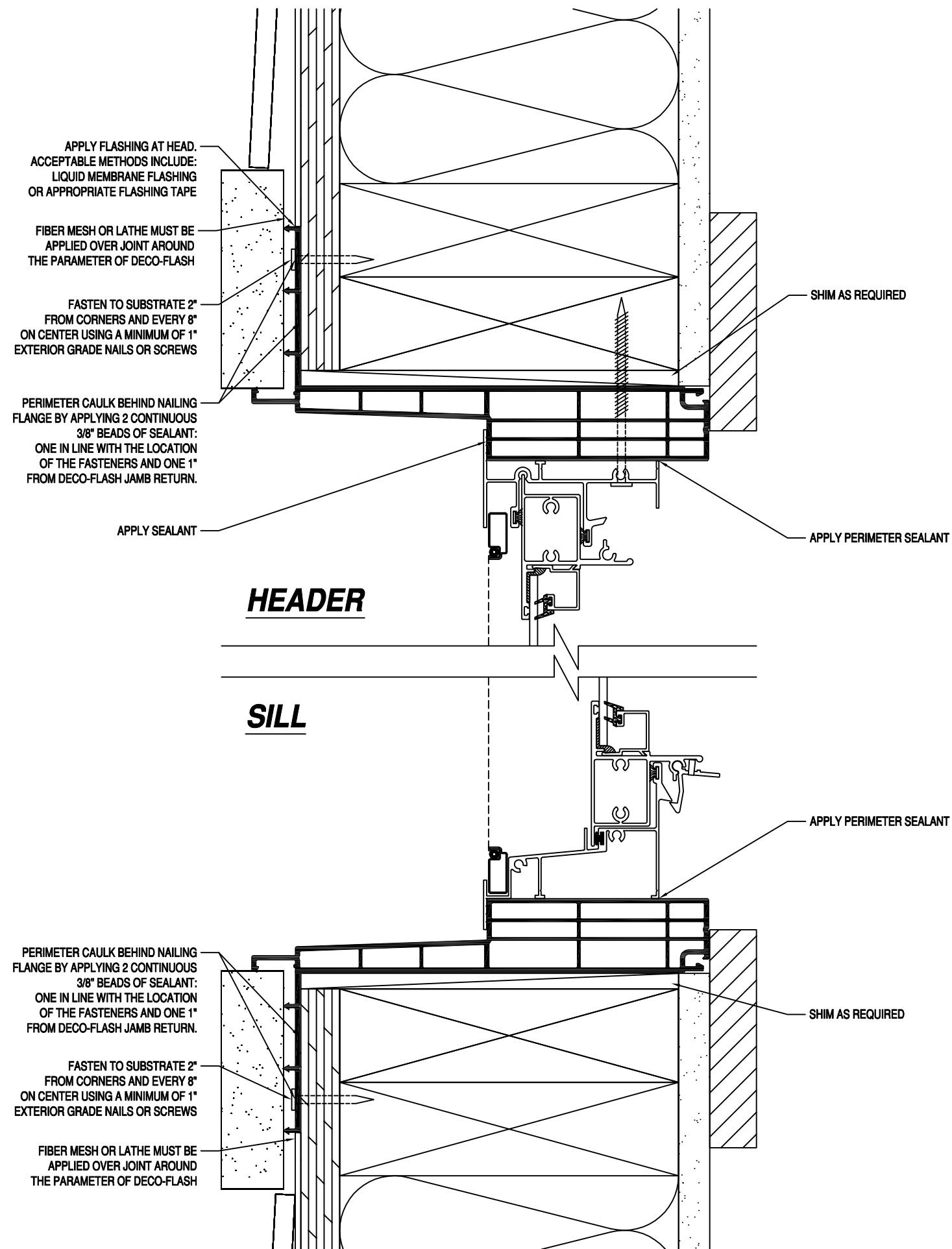
TOLERANCES X.XX ± 0.015 X.XXX ± 0.010 X.XXXX ± 0.005 <small>DO NOT SCALE DRAWING ALL DIMENSIONS ARE IN INCHES U.O.S.</small>		CUSTOMER: DECO-FLASH			
SIZE: 17x11		COLOUR: VARIOUS	MATERIAL: RIGID PVC	AREA: - 2	TOOL NO.: -
SHEET: 1 of 1	DRAWN BY: -	SCALE: 1 : 2	VOLUME: -	PART NO.: AW1	DATE: 10-01-2016 DWG NO.: AW1/M/S



DECO-FLASH
 4717 Oakfair Blvd.
 Tampa, FL. 33610
 Ph: 813-397-2827
 www.deco-flash.com

This document and the information contained is owned by and proprietary to Deco-Flash. By receipt hereof, the holder agrees not to use the information, disclose it to any third parties nor reproduce this document without the prior written consent of Deco-Flash, and agrees to return this document forthwith upon request.

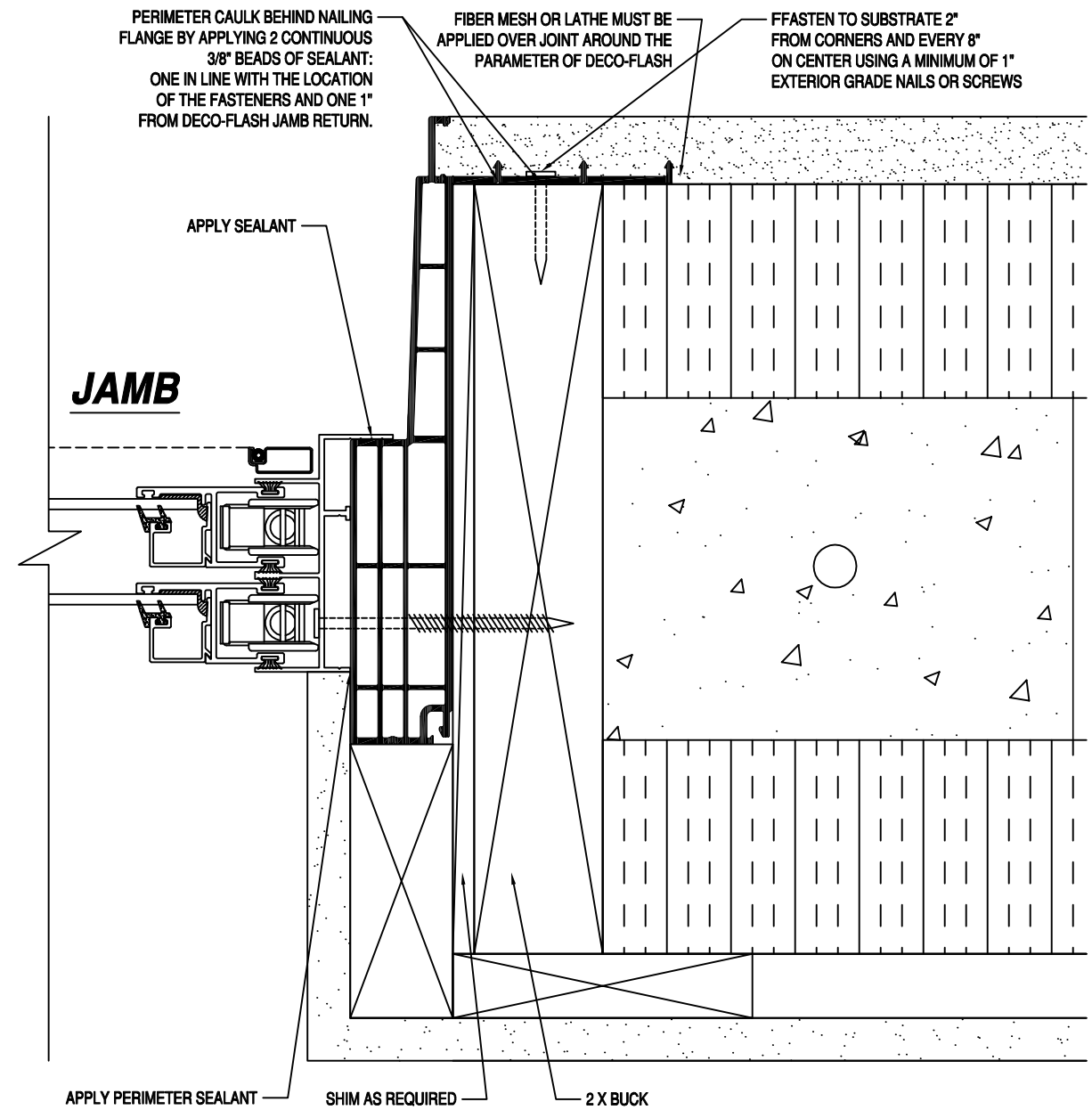
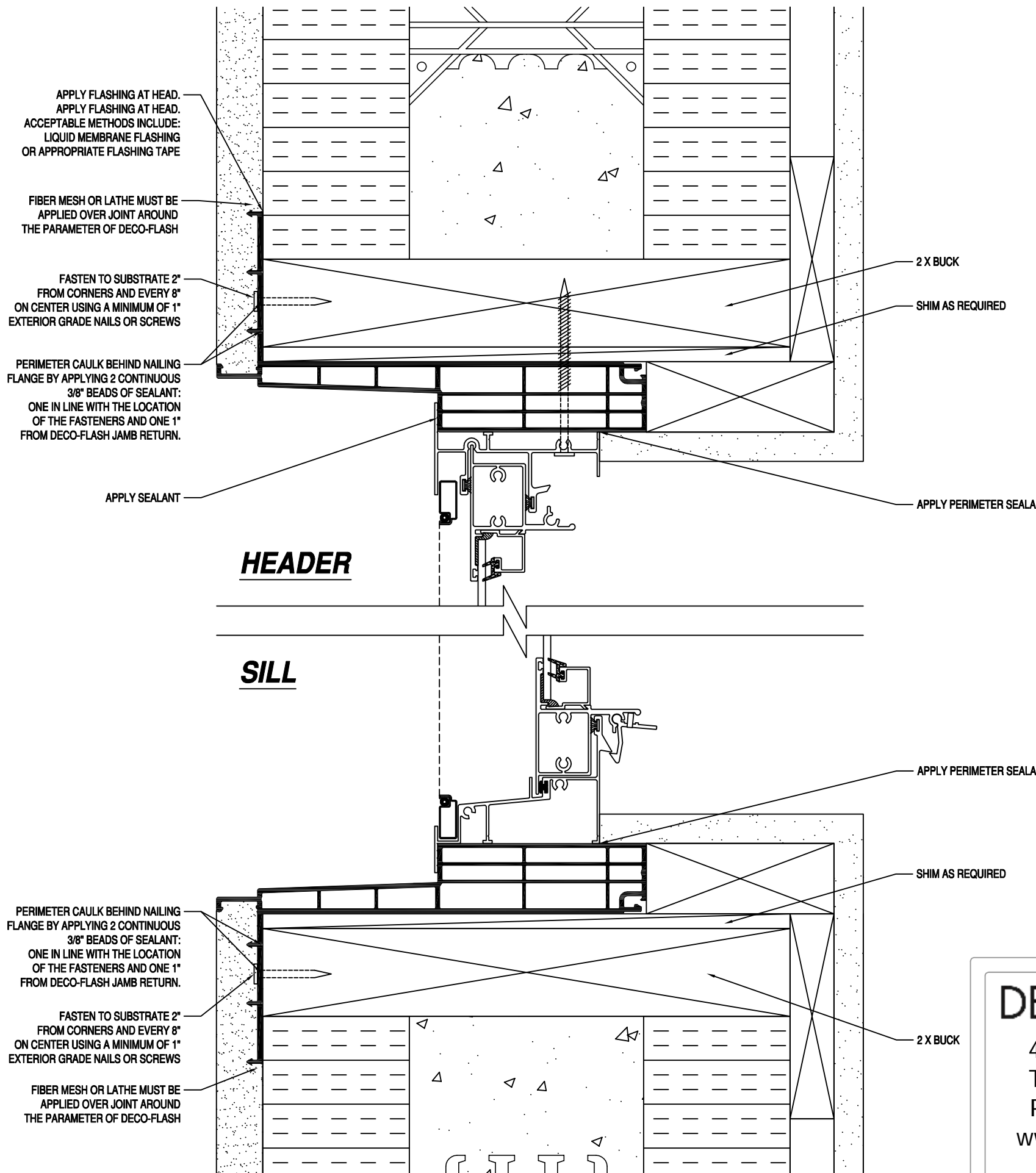
TOLERANCES X.XX ± 0.015 X.XXX ± 0.010 X.XXXX ± 0.005 <small>DO NOT SCALE DRAWING ALL DIMENSIONS ARE IN INCHES U.O.S.</small>		CUSTOMER: DECO-FLASH			
SIZE: 17x11		COLOUR: VARIOUS	MATERIAL: RIGID PVC	AREA: - 2	TOOL NO.: -
SHEET: 1 of 1		DRAWN BY: -	SCALE: 1 : 2	VOLUME: -	PART NO.: AW1
		PART: (AW1) FRAME/STUCCO		DATE: 10-01-2016	DWG NO.: AW1/F/S



DECO-FLASH[®]
 4717 Oakfair Blvd.
 Tampa, FL. 33610
 Ph: 813-397-2827
 www.deco-flash.com

This document and the information contained is owned by and proprietary to Deco-Flash. By receipt hereof, the holder agrees not to use the information, disclose it to any third parties nor reproduce this document without the prior written consent of Deco-Flash, and agrees to return this document forthwith upon request.

TOLERANCES X.XX ± 0.015 X.XXX ± 0.010 X.XXXX ± 0.005		CUSTOMER: DECO-FLASH			
<small>DO NOT SCALE DRAWING ALL DIMENSIONS ARE IN INCHES U.S.S.</small>		PART: (AW1) FRAME/LAP SIDING			
SIZE: 17x11	COLOUR: VARIOUS	MATERIAL: RIGID PVC	AREA: - 2	TOOL NO.:	DATE: 10-01-2016
SHEET: 1 of 1	DRAWN BY: -	SCALE: 1 : 2	VOLUME: -	PART NO.:	DWG NO.:
				AW1	AW1/F/LS



DECO-FLASH
4717 Oakfair Blvd.
Tampa, FL. 33610
Ph: 813-397-2827
www.deco-flash.com

This document and the information contained is owned by and proprietary to Deco-Flash. By receipt hereof, the holder agrees not to use the information, disclose it to any third parties nor reproduce this document without the prior written consent of Deco-Flash, and agrees to return this document forthwith upon request.

TOLERANCES X.XX ± 0.015 X.XXX ± 0.010 X.XXXX ± 0.005		CUSTOMER: DECO-FLASH			
DO NOT SCALE DRAWING ALL DIMENSIONS ARE IN INCHES U.O.S.		PART: (AW1) ICF/STUCCO			
SIZE: 17x11	COLOUR: VARIOUS	MATERIAL: RIGID PVC	AREA: - 2	TOOL NO.:	DATE: 10-01-2016
SHEET: 1 of 1	DRAWN BY: -	SCALE: 1 : 2	VOLUME: -	PART NO.:	DWG NO.:
				AW1	AW1/ICF/S